

Integrated DDS and dual channel DAC

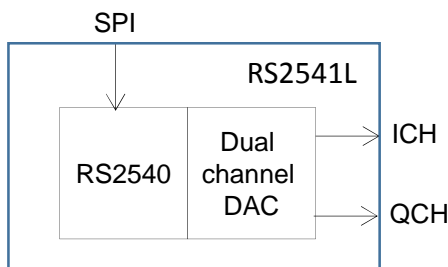
RS2541L description

The RS2541L integrates a digitally programmed frequency synthesizer (RS2540) and dual channel high speed current steering DAC (RS8660L). The digital core comprises of three main units: DDS core, IQ modulator and DAC preconditioning functional units. The complete subsystem is programmable through SPI interface.

The flexibility offers by the RS2541 enables its use to multiple applications.

RS2541L applications

- Radar systems
- Waveform generators
- Phase arrays



Availability

- GDSII
- Documentation

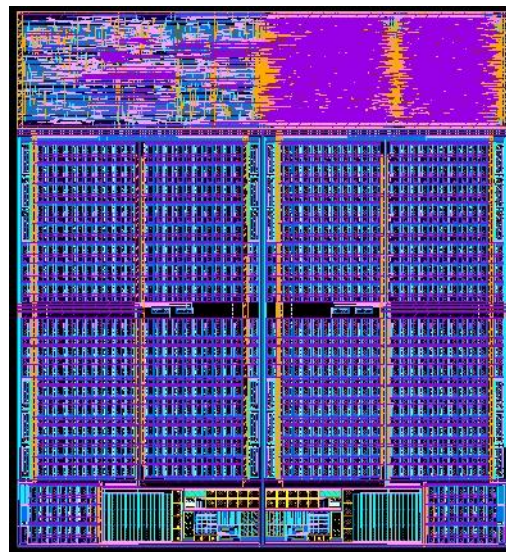
Contact

For more information, visit www.rio-system.com or by e-mail at info@rio-system.com
 RIO SYSTEMS LTD
 7 Gush Etzion St. , Givat Shmuel,
 54030, Israel

RS2541L features

- 24-bit frequency tuning
- Quadrature output signals
- SPI program interface
- Interface to 14-bit DACs
- DAC conditioning filter
- Internal IQ modulator
- Quadrature clock output
- Integrated dual channel DAC

IC layout



Area: 1664 μm x 1816 μm
 Process: TS18SL

State diagram

