

50 MSPS 14-bit Analog to Digital converter

Part number

- ◆ RS8634L

Overview

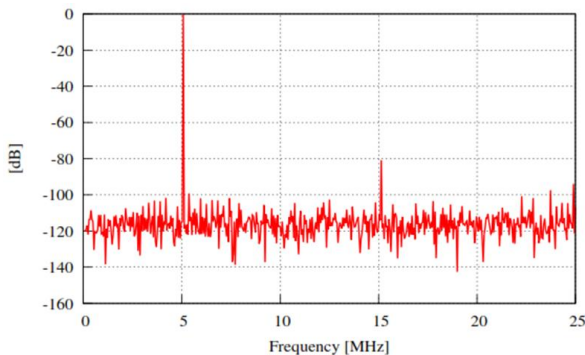
The RS8634L is a 14-bit low power 50 MSPS pipelined analog to digital converter.

Deliverable

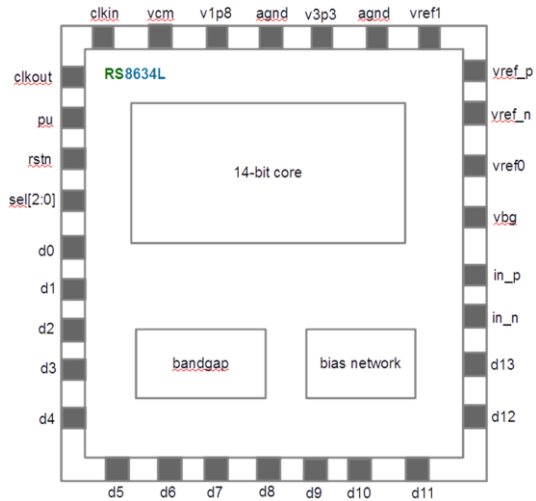
- ◆ GDSII
- ◆ Support

Applications

- ◆ Wireless systems
- ◆ General purpose ADCs



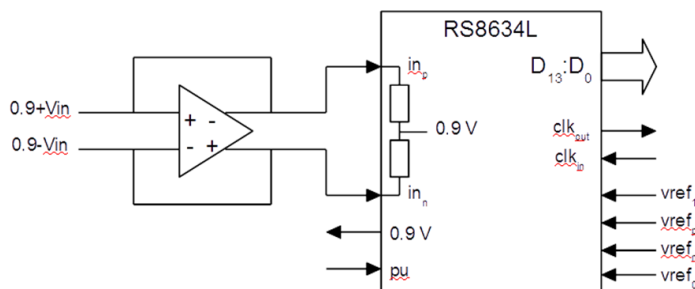
Block diagram



Main specifications

Parameters	Value
Sampling rate	50 MHz
Number of channels	1
Resolution	14 bits
EbNo	13.4@fs=25MHz 12.7@fs=50 MHz
Silicon area	0.6 mm ²
Power consumption	55 mW
Supply voltage	1.8 V / 3.3 V

Configurations



Technology node

- ◆ TowerJazz TS18

Contact

RIO SYSTEMS LTD
7 Gush Etzion St.,
Givat Shmuel, 54030, Israel
E-mail: info@rio-system.com
Tel: +972 3 5349109